

VIDEOINSIGHT

VE4/12 Quick Setup Guide

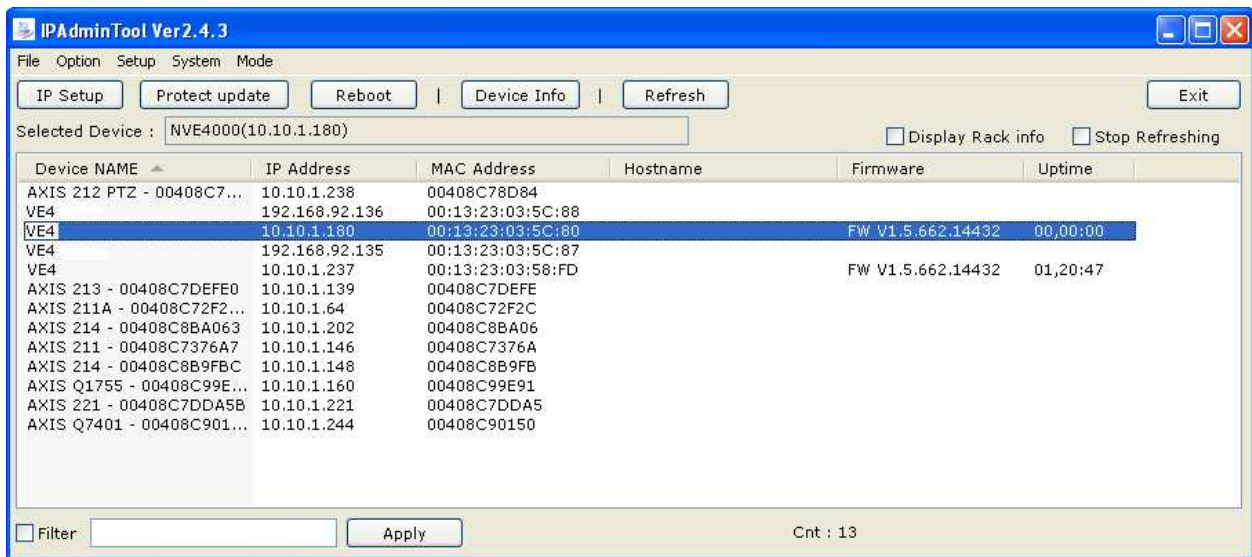
To Configure IP Address

The IPAdmin Tool is a utility program to assign an IP address and update the firmware of the VE4 encoder and is located on the CD in the IP Camera Finder Software/Video Insight folder. Copy the folder to your local PC and run **IPAdminTool.exe**

Scanning Devices

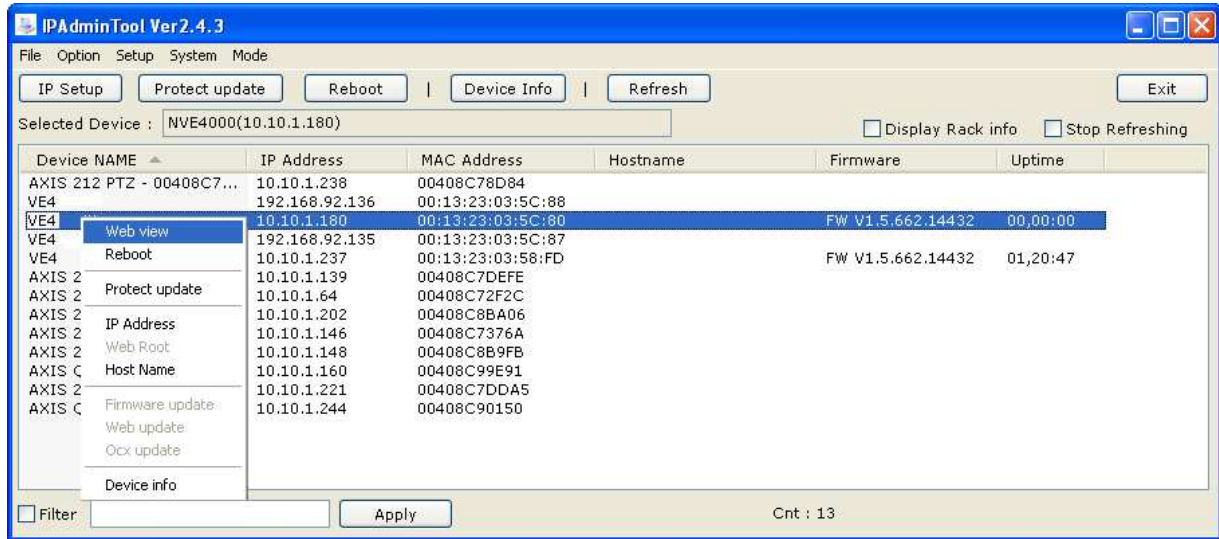
IPAdminTool will scan for VE4 encoders immediately upon startup. It re-scans every two seconds or you can force a scan by pressing the ***Refresh*** button.

NOTE: If you are using a router or other similar devices, make sure your device supports multicast.



The VE12 will display as three VE4 devices.

To assign an IP address to the device, select the VE4 and select the IP setup button or right mouse click the IP address menu.



IP setup requires the Default Username and password.

Username: root

Password: pass



Enter the new IP address, Subnet Mask and Gateway and Press "Setup"